

The Past (Pre July)

Litchfield Board of Education

Region 6 Board of Education



Superintendent



Schools  
(Curriculum / Finances /  
Operations)

Schools  
(Curriculum / Finances /  
Operations)



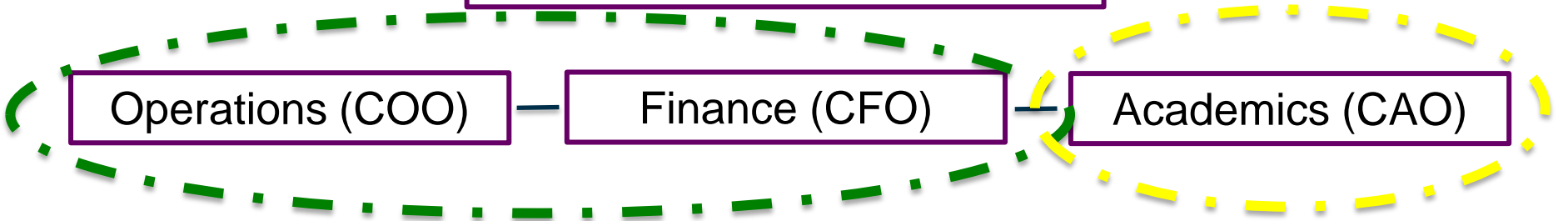
The Current (as July 2019)

Litchfield Board of Education

Region 6 Board of Education



Superintendent



Operations (COO)

Finance (CFO)

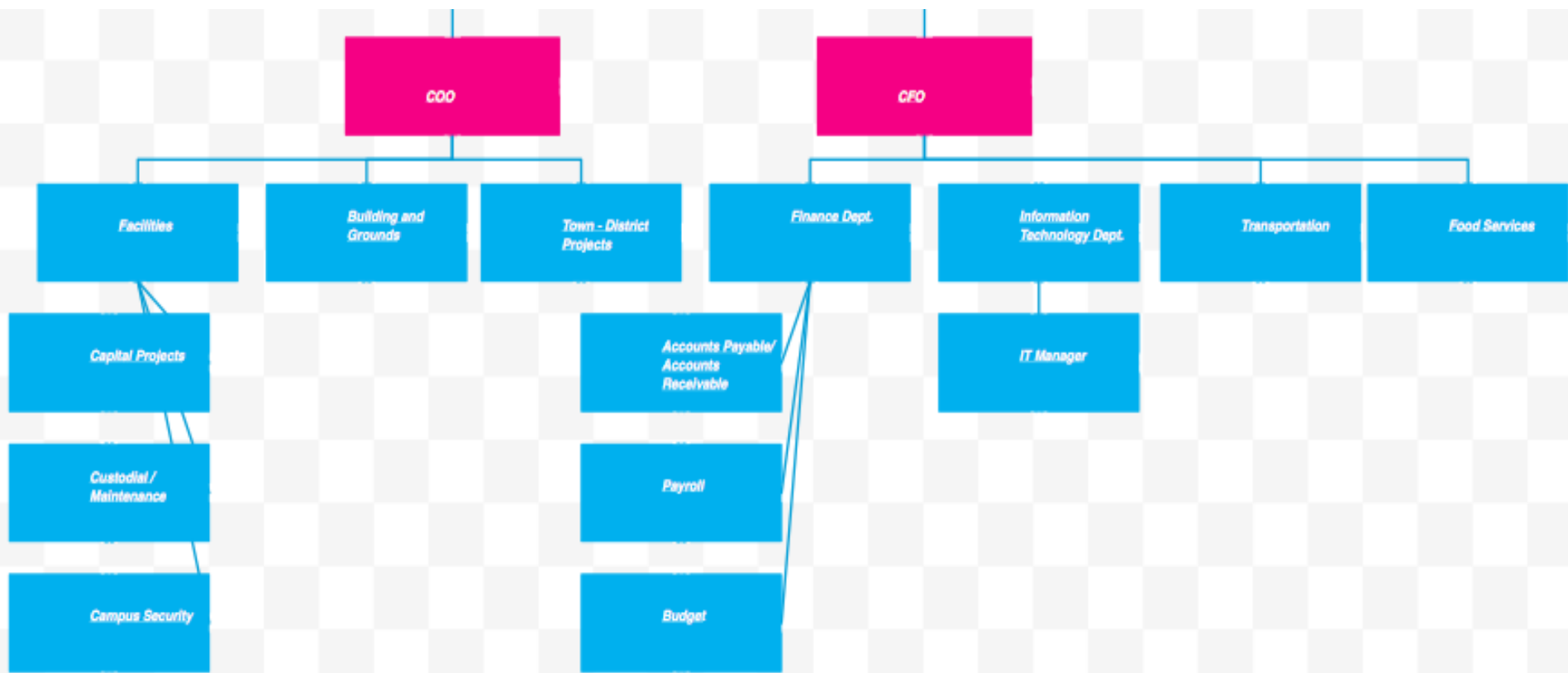
Academics (CAO)



Schools

Schools

The Future (2019 forward)



**2019-2020 Focus (Operations and Finance - DRAFT)**

## Why?

- LPS + RSD6 = \$39M +/- Combined
- 8 Schools (7 Buildings)
- Need to foster greater collaboration and access (data, buildings, finances, projects) to realize potential efficiencies / savings / sustainability

## Next Steps?

- If BOE approves concept then...
- Revise Job Descriptions (July - August)
- Negotiate Changes (August)
- **DOES NOT REQUIRE ADDITIONAL POSITIONS**